

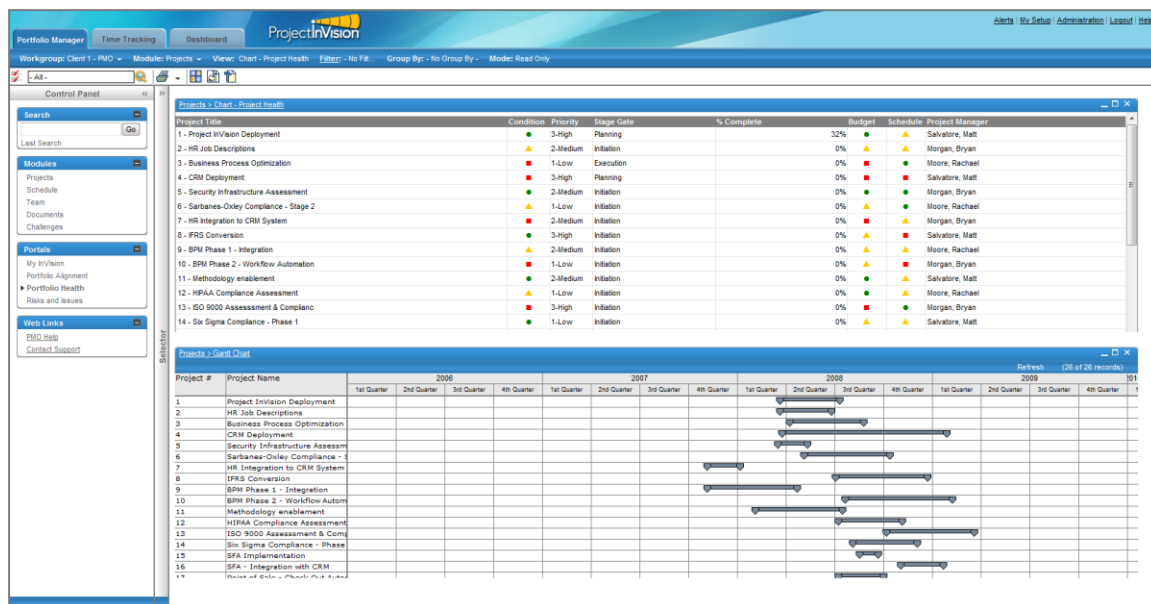


What's New in Project InVision 2010

We are pleased to announce the release of Project InVision 2010. In this major release we have completely redesigned the application interface, taking advantage of the latest Web technologies, to offer a more intuitive, modern and visually pleasing experience. We've also included a simple, automated routine to enable new users, streamlining the rollout of Project InVision to an organization. The release offers a series of technology enhancements to support the latest platform releases from Microsoft, and a library of new reports to leverage the power of Microsoft SQL Server Reporting Services. Lastly, the release includes additional enhancements and fixes, based on customer input, to improve the overall usability, stability and performance of Project InVision.

New Application Interface

The entire Project InVision application interface has been redesigned, taking advantage of the latest Web technologies, to offer a more intuitive, modern and visually pleasing experience. New collapsible control panels simplify the interface providing a cleaner look and offering more on screen workspace. Selectable color schemes and background images provide a more modern Web experience and allow you to brand and differentiate different solutions or workgroups.



New User Enablement

Rolling out Project InVision to a population of new users has become much easier with Project InVision 2010. New users are prompted through a simple, automated process to download and



setup all the necessary controls and options, creating a seamless and streamlined rollout of Project InVision to an organization.

Technology Enhancements

Significant efforts have been expended to update, test and certify Project InVision 2010 for compatibility with the latest platform technology enhancements from Microsoft, including Microsoft Windows 7, Internet Explorer 8, Windows Server 2008 and SQL Server 2008.

Enhanced Reporting

With Project InVision 2010 we have included a library of new reports to run on Microsoft SQL Server Reporting Services. These reports can be rolled out as-is to enhance your Project InVision reporting capabilities, or used as templates by your report developers to design new custom reports to meet your reporting requirements.

Microsoft Project Integration Enhancements

We have enhanced our integration with Microsoft Project with the Project InVision Microsoft Project Toolkit (PIIMPT). This add-on for Microsoft Project includes Schedule Sentry, a context-sensitive monitor for Microsoft Project which evaluates changes to schedule information and alerts the user when those changes might cause problems when checking a schedule file back into Project InVision.

And Much More...

Project InVision 2010 includes hundreds of minor enhancements to improve the usability, stability and performance of the system.